

# Central Montana Homes & Land

*"The Center Of The Big Sky"*

Photo By Mary Peters  
Fall 2010

[MONTANAEASYLIVING.COM](http://MONTANAEASYLIVING.COM)

**Making Dreams  
Come True**  
See page 3

**FIRST  
BANK  
of Montana**  
[www.1stbmt.com](http://www.1stbmt.com)  
224 West Main • Lewistown, MT

  
Equal Housing  
LENDER  
Member  
FDIC



FAMILY. SPORTING PURSUITS.  
CONSERVATION. VALUE.  
**LIVE IT.**

Bring **family** together, now and for generations, far from your busy everyday lives.  
Experience **sporting** opportunities as you always dreamed you would. Enhance the vitality of your property and its surrounding ecosystem with smart **conservation**. Implement effective stewardship while growing the **value** of your investment.

To live it, find it at:  
[www.FayRanches.com/hlc](http://www.FayRanches.com/hlc)  
1-800-238-8616



**Diamond B Ranch on the Yellowstone**  
Emigrant, MT • \$23,500,000



**Keep Cool Creek Ranch**  
White Sulphur Springs, MT • \$3,900,000



WITH OFFICES THROUGHOUT THE WEST

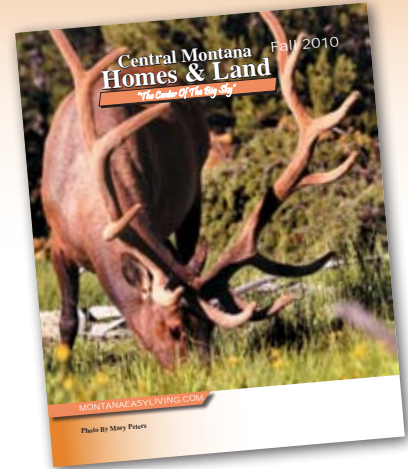
MONTANA TELLURIDE SUN VALLEY JACKSON HOLE BOISE BEND

## Advertiser Index

Name	Phone	Page
Big Spring Realty.....	535-4440	4-6
Central Montana Real Estate .....	632-4465	32-34
Cornerstone Real Estate.....	350-1164	31
Fay Ranches Inc. ....	800-238-8616	2,35
Fergus Federal Credit Union.....	538-7478	7
First Bank of Montana .....	538-7471	3
Frontier Realty .....	538-2821	8-9
Garden Realty .....	538-5162	10-13
Greater MT Land Co.....	538-5448	14-17
Homestead Properties .....	535-7107	22-23
Lewistown Real Estate.....	538-3476	7
Mary Peters Photography.....	636-4000	Cover
McKenna Agency.....	538-8736	18-20
Phillips Realty .....	538-5271	36
Realty Title.....	535-2326	29
Shobe Realty .....	538-5125	24-27
Town & Country Realty.....	350-1088	21
Weaver Ranch Properties.....	525-4490	30
Wells Fargo .....	538-1006	28
<a href="http://www.montanaeasyliving.com">www.montanaeasyliving.com</a>		

## Central Montana Homes & Land

*"The Center Of The Big Sky"*

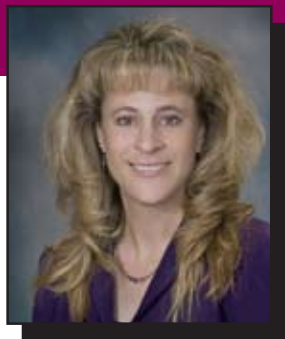


*Central Montana Homes & Land is distributed in over 40 locations in Central Montana. For information please contact:*

**Ed Schoenen**  
**Central Montana Homes & Land**  
**406-350-1431**

Visit the Lewistown Board  
of Realtors Site at:  
[www.lewistownmontanaboardofrealtors.com](http://www.lewistownmontanaboardofrealtors.com)

## Making Dreams Come True...



**Julie Hartman**  
Consumer Banking Officer



224 West Main • Lewistown, MT

**538-7471**



**Diane Rector**  
Consumer Banking Officer

**Stop By And See What Our Experts Can Do For You!**

More photos and details at... [www.montanaeasyliving.com](http://www.montanaeasyliving.com)



**LOG HOME** in Denton, 6 bd, 2 bath, 1768 sq ft - wood burning stove, wonderful open kitchen, family room in basement and unbelievable storage on a double lot. **\$90,000.** Call Cherie MLS #101083



**MOBILE HOME** in Denton, 3 bd, 2 bath, 1216 sq ft on large lot on edge of town with a 2 car detached garage. **\$45,000.** Call Cherie MLS #101090



**BEAUTIFUL HOME** on 4 beautifully landscaped lots with views of the Snowy Mountains in Judith Gap. 3 bd, 2 bath, 1456 sq ft. **\$135,000.** Call Cherie MLS #101064



**LIVING IN PARADISE** with your honey. From the fantastic custom oak kitchen, master bedroom with custom oak cabinets & jacuzzi tub for HER to the 5000 sq ft pole barn with a 1250 sq ft fully insulated & heated shop for HIM. 5 bd, 4 bath, 5248 sq ft. Views, seasonal pond, beautiful landscaping & much more. **\$499,950.** Call Cherie MLS #100929



**A TOTAL MAKEOVER** is what you get in this cozy little house in Stanford. NEW roof, NEW siding, NEW vinyl windows, NEW furnace, NEW wiring. Price reduced to **\$59,000.** Call Cherie MLS #100563



**MOUNTAIN TOP LOG HOME** located 5 miles south of Lewistown. 5300 sq ft, 4 bd, 3 bath, large rooms, maple cabinets, office, breakfast nook, sunroom, tremendous views, and marine grade speakers on the deck. Situated on 6.71 acres end of road privacy among the pine & aspen trees with two double car garages and a storage shed. **\$669,000.** Possible owner financing. Call Cherie MLS #100604



**MOVE-IN CONDITION** in this 2 bd home in Denton. NEW in 2003 - roof, front door, & metal siding that is double insulated. Plus a BRAND NEW 1200 sq ft shop. A wrap around deck on the house and a beautiful yard all on a corner lot. **\$90,000.** Call Cherie MLS #100883



**RESTORED BEAUTY** in this 3 bd, 3 bath home on 12,000 sq ft corner lot in Lewistown. Remarkable craftsmanship with 10' ceilings, stone arches, knotty hickory cabinets, hickory hardwood floors and much more including a newly constructed 28x40 finished & heated 2 car garage with 1/2 bath. **\$250,000.** Call Cherie MLS #100682



**CUTE HOUSE** in Denton, 3 bd, 1 bath, on 10,500 sq ft lot, single car detached garage. **ONLY \$20,000.** Call Cherie MLS #100904

Cherie Neudick  
Broker/Owner, CRS, WHS, SRS  
366-2632  
[cherie@bigspringrealty.com](mailto:cherie@bigspringrealty.com)

Pat Warren  
GRI  
366-4987  
[pat@bigspringrealty.com](mailto:pat@bigspringrealty.com)

Victoria Beddall  
Sales Agent, WHS  
366-3897  
[victoria@bigspringrealty.com](mailto:victoria@bigspringrealty.com)

Garry Gellner  
Broker/GRI  
366-1118  
[garry@garrygellner.com](mailto:garry@garrygellner.com)

More photos and details at... [www.bigspringrealty.com](http://www.bigspringrealty.com)



**GOOD BUY** on this 2 bd, 1 bath, 1008 sq ft home with single car garage in Lewistown. **\$85,000.** Call Cherie MLS #101053.



**LARGE HOME** on almost 1/2 acre in Hobson. 6 bd, 2 bath, 2002 sq ft, wrap around deck, large laundry room, pantry, 3 car garage, plus **LOW TAXES.** **\$175,000.** Call Cherie MLS #101008



**LOTS OF CHARACTER**, great location on Spring St in Lewistown, 3 bd, 3 bath, new kitchen, 1304 sq ft, **\$135,000.** Call Cherie MLS #101029



**TREES, WATER, VIEWS**, 3 bd home, barn, livestock shed, 40 acres just minutes from Lewistown, **\$299,000.** Call Cherie MLS #101048



**A MEANDERING CREEK** runs through this 20 acres at Garneill, 3 bd, 1 bath home, 45x75 all steel building, barn, lambing shed, and much more. 5 minutes to the Snowies on the West and the Little Belts on the East. **\$325,000.** Call Cherie MLS #100936



**BEAUTIFUL HOME** located on 1.13 acres just out of the city limits of Lewistown. Built in 2007, 3 bd, 2 bath, open floor plan, bonus room, great room, dining room, walk-in closets plus a 2 car garage with a shop area. **\$205,000.** Call Cherie. MLS#100826



**RANCH STYLE LIVING** in this 3 bedroom, 1-1/2 bath home in a very quiet neighborhood on a 10,800 sq ft lot. **NEW** flooring in the kitchen, **NEW** carpet in the oversized living room, **NEW** pantry, **NEW** kitchen sink. This property has an oversized 2 car garage, a large storage shed and a beautiful back yard. **\$179,000.** Call Cherie. MLS #100328



**LOTS OF POTENTIAL** for this property. The Sundown Inn is located in Stanford right on Highway 87, 60 miles East of Great Falls and 45 miles West of Lewistown. This price includes restaurant equipment, exercise equipment and a full liquor license. **\$99,500.** Call Cherie MLS #100471



**HAND-SCRIBED LOG HOUSE**, 3200 sq ft with full walk-out basement, 2 bd, 2-1/2 bath, granite countertops, stainless kitchen, radiant floor heat, rock fireplace, hardwood floors and end of the road privacy with unbeatable views. 20 acres fenced with a 20x20 shop, 12x30 pole barn. **\$449,900.** Call Victoria - agent owned



**WHAT A BUY** on this property in Stanford which includes an extra house that is used as a work shop and an oversized single car detached garage on a double lot. Two bedrooms, 1-1/2 baths, open between the kitchen & living room and a wood stove. **\$49,000.** Call Cherie. MLS #100064



**2 STORY HOUSE** in Stanford, 3 bd, 1 bath on 7000 sq ft corner lot - very nicely updated beautiful oak kitchen and a propane fireplace **\$85,000.** Call Cherie MLS #100921



**COZY HOUSE** in Judith Gap, 2 bed, 1 bath, updates include new wiring, new plumbing, rooms are large and open, lot is 10,500 sq ft, includes a 2 story storage shed. **ONLY \$39,000.** Call Cherie MLS #100902



**TIRES & MORE IN STANFORD.** 3747 sq ft commercial building on a double sized corner lot with a tire shop & car wash. Lots of room for expansion with this business. **Price drastically reduced \$60,000.** Call Cherie MLS #100801

# Big Spring REALTY

(406) 535-4440



**ALMOST NEW** in Denton. 1254 sq ft house, corner lot on the edge of town. NEW roof, NEW siding, NEW windows, NEW flooring, NEW oak kitchen & counter tops. Beautiful bay windows, open design and a loft over the bedroom. **\$57,500.** Call Cherie



**A LOT OF PROPERTY FOR THE MONEY** - on 1.25 acres at Stanford, 2+ bedroom, 2-1/2 bath, full basement, large rooms, lots of windows and lots of storage. Fireplace, book closet, large shop with 1/2 bath. **\$150,000.** Call Cherie MLS 100922



**VIEW OF THE SNOWY MOUNTAINS,** beautifully remodelled 2432 sq ft, 2 story farm house. 3 bedroom, 1 bath, full basement. 40x64 shed, PLUS 20 acres for the critters, located 15 miles SW of Lewistown. Asking **\$275,000.** Call Cherie MLS 100072



**NICELY REMODELED** two bedroom house in Stanford. Large rooms, oak kitchen, large laundry room, 7000 sq ft lot. **\$49,500** MLS 100889



**HIGHWAY COMMERCIAL ACREAGE.** 1.38 acres bordered by Boyd Creek and Highway 87 East. Great spot to build an office complex, mini mall strip or????? Electricity, Natural Gas, City water & sewer and telephone all available at the site. **\$139,500.** Possible owner financing. Call Cherie MLS 100594



**MOUNTAIN TOP GRANDEUR!** 960 acres of very private land on the ridge between Cottonwood Creek and Beaver Creek. Timber, hay meadows, pasture, and VIEWS galore. There is power to the old home site affording the perfect situation to construct your dream home. **\$2,496,000.** Call Pat MLS 100684



**A COMFORTABLE HOME** large oak kitchen, dining room and a large laundry room with lots of storage in Denton. A well-cared for 4 bd, 2 bath home, 2 car garage on large corner lot. **\$69,900.** Call Pat MLS 1008978



**ONE OF A KIND** parcel of land. 19.6 acres on Hanover Road. Can be used for commercial or residential. Includes operating scale house. Corrals, barn, other outbuildings, power & phone. Beautiful views, paved highway access and much more offered for **\$250,000.** Call Cherie. MLS#100825



**70 ACRE RANCHETTE** in Grass Range includes a 2700 sq ft 4 bd, 2-3/4 bath home, 3600 sq ft quonset, 7500 bu grain storage, frame barn, 1780 sq ft shop & several other outbuildings. The home has many updates including a new furnace and new roof. The property has hay land, mature evergreen trees & pasture. **\$450,000.** Call Pat. Agent owned.



**OPPORTUNITY** to locate your business in a very visible location with highway frontage. 5000 sq ft building on 15000 sq ft commercial lots. **\$165,000.** Call Cherie MLS 100903



**TWO FOR THE PRICE OF ONE** - Large home has 2688 sq ft, 4 bd, 1-1/2 baths, smaller home is 720 sq ft, 2 bd, 1 bath. Live in one, rent the other. Many updates including new roof, new windows, new furnace & new plumbing. Located in Stanford on a 14,000 sq ft corner lot with double car garage, carport & much more. **\$147,500** Call Cherie MLS 100781

Gary Kruger  
Broker/owner  
538-3476

Stacy Danzers  
Sales Associate  
366-6978



111 4th Ave. South  
Lewistown, MT

Phone  
**538-3476**

- **3 bedroom, 2 bath** mobile home with attached garage **\$42,000**
- **180 acres in the country** with very nice brick home- **price reduced**
- **Own your own business** near the Missouri River breaks- Buy the Roy Bar
- **We have 14-5 acre lots** on the edge of Lewistown-**Make offer**
- **Hunting season is here**-how about a 20, 40 or 80 acre parcel on North Fork of Flatwillow. Could be combined.

- **3 bedroom home** on Spring Creek- Owner financing
- **RV park in Judith Gap** with room to develop **\$50,000**
- **The water is up at Crooked Creek.** Have a 1 acre lot to build on or tent on- **\$25,000**
- **Compare the price per square foot** on this totally remodeled home at 715 5th Avenue South in Lewistown and you will see this is the best buy available.

On the Internet: [www.LREMT.com](http://www.LREMT.com)



## Fergus Federal Credit Union

*The One Place To Go*

**IF YOU'RE LOOKING TO:**

- *Purchase* • *Build* • *Refinance*

**Then talk to one of our friendly staff today. We offer an efficient mortgage department that will make all that paper work seem like a breeze.**

**[www.fergusfcu.com](http://www.fergusfcu.com)**

Please contact Courtney @ 538-7478  
or visit us at 106 East Janeaux in Lewistown, MT 59457



825 West Main  
Lewistown, MT

406-538-2821

# Frontier Realty

www.frontier-realty.net  
frontier@frontier-realty.net  
Fax: 406-538-2822



**Carole Songer,**  
**Broker**  
**350-2838**

**Jerome (Pete) Peterschick**  
**350-1622**

**Anita Songer**  
**350-0686**



**22 GORGEOUS ACRES.**

In the foothills of the Snowy Mtns. Adjoining Beaver Creek, and a large ranch. Gravel road, well, power 2 bldg pads to choose from. **\$200,000** Call Carole



**UPDATED TWO STORY.**

Owner will look at offers!! 5 bedroom, 3 bath with hardwood floors, large kitchen-dining room. Gas Fireplace. Rec Room/office. Fenced yard and garage. **\$149,900.** Call Carole or Anita



**IN THE FOOTHILLS OF  
THE SNOWY MTNS**

Beautiful area with cabin, trees and a view. Near a tributary of Beaver Creek for fishing. Lots of wildlife in the area. Power nearby. All 40 Acres for **\$195,000** or 20 acres (without cabin) for **\$89,000.** Call Carole



**SMALL TOWN LIVING.**

Charming 1910 3 BR 1 bath home in Moore, Mt. on 18750 sq ft corner lot. With older guest house, garden shed, chicken house, lilacs, and mature trees. **\$89,900.** Call Anita or Carole



**65 BEAUTIFUL  
AND REMOTE ACRES.**

Great place for your hunting cabin or summer retreat. 18 miles NW of Lewistown **\$130,000.** Call Anita for details



**DELUXE NEWER MOBILE HOME.**

3 Br 2 Bath Friendship. Gorgeous yard with chainlink fence, flowers, tree, and patio. On rented lot. 1018 Mtn View Drive. **\$49,900.** Call Carole on this one



**SPACIOUS 3 BEDROOM.**

Unique and charming home with full basement. On 9000 sq ft lot with trees, fenced yard, covered deck, carport and garage. **\$140,000** Call Carole



825 West Main  
Lewistown, MT  
**406-538-2821**

# Frontier Realty

www.frontier-realty.net  
frontier@frontier-realty.net  
Fax: 406-538-2822



**Carole Songer,**  
**Broker**  
**350-2838**

**Jerome (Pete) Peterschick**  
**350-1622**

**Anita Songer**  
**350-0686**



**New Listing!**  
**HISTORIC MAIN ST RESTAURANT.**  
Building, equipment, fixtures and inventory included in sale. Shown by appointment to qualified buyers. **\$250,000** Call Anita for details.



**New Listing!**  
**DELUXE 2 BEDROOM CONDO.**  
Beautifully kept 1224 Sq ft condo. With double garage. Close In. **\$109,000** Call Pete



**New Listing!**  
**LITTLE HOUSE ON THE PRAIRIE**  
One bedroom, one bath, with sleeping area in loft. On 2.24 acres 5 miles from Roy, Mt. **\$69,000** Call Anita



**GREAT OPPORTUNITY**  
Owners would sell or lease this historic 3 story brick building. Over 6000 sq ft of space. Now zoned "residential". New high efficiency furnace. **REDUCED to \$125,000 !!!!** 624 W Washington. Call Anita



**40 ACRE HOBSON RANCHETTE.**  
Great horse set up on the edge of town. Very attractive 3BR 2bath home, with fenced yard PLUS 32 x 36 insulated shop/garage. **\$289,500.** NOTE: **Owner might consider selling 20 acres separately.** Call Pete for all details



**New Listing!**  
**BEAUTIFULLY UPDATED 2 BEDROOM.**  
Extensively remodeled newly painted plus many new windows. Lovely yard. Single garage w/workbench and cement floor. **\$69,500** Call Pete



**ABSOLUTELY GORGEOUS SETTING**  
This lovely brick home with attached garage is on 3 beautiful lots, with many trees. Nice one bedroom, plus large family room on the main floor. 2 sleeping rooms in the basement plus lots of storage. One bath up, 1/2 bath down. 223 Prospect. **\$129,500.** Call Anita or Carole



**LOTS OF ROOM FOR THE GROWING FAMILY**  
This unique 3 BR 2 Bath home has 1624 sq ft on the main floor, plus 1624 sq ft on the upper level. Large master bedroom on main floor. Huge family room on upper level. A surround deck to enjoy the view, plus an attached 2 car garage, with heat. 513 W Erie. **\$95,000** Call Carole for all details



**ON PERMANENT FOUNDATION**  
This 1984 4 bedroom 2 bath mobile sits on its own 5000 sq ft lot, Very nicely updated. Newer windows, new carpet, deck, fenced yard plus newer 12 x 16 shed. **\$45,000** 126 Reno. Owner financing with good down payment. Call Carole

Rick Dyck  
Broker/Owner  
**350-5162**

Cheryl Gillen  
Broker  
**366-2144**



Rusty Clave  
Broker/ABR  
**350-2573**

Tim Gillen  
Broker  
**366-2074**

## Homes In Town



**CONVENIENTLY LOCATED** – In 2004 property was updated with new siding, windows, electrical service, plumbing, furnace, hot water heater and sheet rock interior. Some work still remains to complete but, the price has been reduced to **\$49,900** and is well worth the time and effort. Call Rusty on this one.



**GOOD STARTER HOME** – Has two bedrooms, one bath, dining room, living room w/ fireplace, enclosed front porch, deck, full basement and two car garage. 908 5th Ave South - **PRICE REDUCED TO \$79,000.** Call Cheryl today!

**MANY EXTRAS** in this 2 bedroom, 1 ½ bath home with heated garage and carport. Updated kitchen and baths, hardwood and fir floors, security system, gas fireplace, and a paved alley. 711 West Erie St. **\$115,900.** Call Rick on this one.



**AFFORDABLE FAMILY HOME** – Four bedrooms, 3 baths (one on each level) family room and additional finished area in basement. Call Cheryl. 1006 West Spring. **\$129,000.**



**GREAT BUY** – Home with 3 bedrooms, 1 ¾ baths, full basement that is mostly finished, 2 car detached garage, deck, & chain link fencing. Only **\$130,000.** 136 15th Ave South. Call Cheryl or Rick.



**HOME WITH 2.5 LOTS** that are zoned C-2 (Central Business) only 2 blocks from downtown. 3 bedroom, 1 bath home with a large lot for your business. **PRICE REDUCED TO \$100,000.** Drive by 316 West Watson and give Rick a call.



**ENCLOSED FRONT PORCH** is one of the amenities with this 1 ½ story home. 3 bedrooms, 1 ½ baths, fireplace, partially finished basement, 1 car detached garage, patio area. All for **\$139,000.** 704 West Evelyn St. Call Rick today.

Visit Us On the Web at: [www.gardenre.com](http://www.gardenre.com)

Rick Dyck  
Broker/Owner  
**350-5162**

Cheryl Gillen  
Broker  
**366-2144**



Rusty Clave  
Broker/ABR  
**350-2573**

Tim Gillen  
Broker  
**366-2074**

## Country Homes



**COUNTRY LIVING WITH 25 ACRES** and a beautiful 2,400 sq ft home, all on one level, that includes a 2 car attached heated garage and 2 decks. Includes a huge 4,960 sq ft insulated/heated shop building for your toys and hobbies. Beautiful landscaping and many extras. Priced to sell at **\$399,000**. Call Rick today.

**40 ACRES WITH WATER** and a totally renovated beautiful home, historic barn and more, only 9 miles from Lewistown. Casino Creek runs through this property and fills a large pond. It also has a huge spring that fills a small pond. The large home with a daylight basement has too many amenities to mention. The price has been reduced. Call Rick for details on this one-of-a-kind property.



**20 ACRES** between Hobson & Utica. Includes a spacious remodeled 4 bedroom, 2 bath home with over 2,400 sq ft, large wrap around deck, oversized 2 car garage, paved road access, and a spring. Give Rick a call to look at this great opportunity.

Visit Us On the Web at: [www.gardenre.com](http://www.gardenre.com)

Rick Dyck  
Broker/Owner  
350-5162

Cheryl Gillen  
Broker  
366-2144



Rusty Clave  
Broker/ABR  
350-2573

Tim Gillen  
Broker  
366-2074

## Lots & Acreage



**SOUTHERN EXPOSURE** – 2 tracts of land with excellent views and southern exposure. Two adjoining 6.1 acre tracts only minutes from town. Take your choice, or buy the pair. **\$69,900** each. Call Rick today.



**FOX HOLLOW** corner lot with excellent views. **\$34,900**. Call Rick.



**5.5 ACRES** close to town. **\$54,900**. Will consider house in trade. Call Rick.



**11.5 ACRES** with a well near East Fork Dam. Electricity & Phone in road. **\$104,900**. Will consider house in trade. Call Rick.



**5.7 ACRE** tract close to town with excellent views near golf course. **PRICE REDUCED TO \$69,000**. Call Rick today!



**PAR 5 ESTATES** – Take your pick, you have your choice of remaining lots bordering Pine Meadows Golf Course. Excellent views. Underground power, telephone & natural gas to each lot. 2.6 to 4.5 acres each. **\$70,000** on up. Call Rick for details.



**COMMERCIAL ACREAGE** bordering the west side of Lewistown. 5 1/2 acres with 362' of frontage on H Street. MDEQ has approved the site for a commercial building with well & septic, subject to the terms of the certificate of subdivision approval. Agent owned. Call Rick. **\$137,500**.

**WINIFRED SPECIAL**  
– 2 lots with a building. Building has electricity & phone. Public water & sewer are on the lot. Priced to sell at only **\$18,000**. Call Rick.



**LITTLE CASINO CREEK** – This 21.3 acre tract of land has a beautiful setting with a creek meandering through it. Close to town in an excellent location for your dream home and horses. **PRICE REDUCED TO \$149,000**. Call Rick today.



**DEVELOPMENT POTENTIAL** – This 46 acre tract of land is adjacent to the Lewistown City Limits and has Little Casino Creek meandering through it. Excellent location. **PRICE REDUCED**. Call Rick for details.

**GREAT EXPOSURE**  
– three lots with 120' of bypass frontage. **PRICE REDUCED TO \$24,995**. Call Cheryl.



**WILL CONSIDER TRADES** for 160 acres with 148.3 acres of enrolled in CRP. Improvements include a well, septic system, power, and an old farmstead. **PRICE REDUCED TO 299,000**. Call Rick today.

Rick Dyck  
Broker/Owner  
350-5162

Cheryl Gillen  
Broker  
366-2144



Rusty Clave  
Broker/ABR  
350-2573

Tim Gillen  
Broker  
366-2074

## Business & Commercial



**HEATED SHOP** – 50' X 80' heated shop located on a 15,000 sq ft lot. Lots of parking and potential. Can be easily divided for 2 separate businesses. **PRICE REDUCED TO \$124,900.** Call Rick for details.



**SHOP WITH LIVING QUARTERS** in this well constructed building located in Hobson, MT. It measures 46' X 80' with 16' sidewalls and the shop area includes 3 large bays, a ½ bath and hot water radiant floor heat. The two-story living quarters has over 1,800 sq ft and includes 3 bedrooms and 2 baths. The living area is done up with Aspen tongue & groove walls. You truly must see it to appreciate. Includes 7 lots & an RV hook-up. **\$285,000.** Call Rick.



**TRAILS INN BAR** in Winifred. Includes the real estate, business, full beverage liquor license, and FF & E. Call Rick for more information.

## Condos



**PERFECT PLACE TO RETIRE** – This beautiful 2 bedroom, 2 bath condo, has floor to ceiling built-in cabinets in the den, new hard surface counter tops, private deck and entrance. To see it, call Cheryl.



**WHAT A BUY** – Spacious 3 bedroom, 2 bath condo, master bedroom has walk-in closet, with separate shower and spa tub. Some features are ceiling to floor oak shelves in the living room, two large private decks, (one on the east side and the other on the south side) and carport with storage. Priced at **\$135,000.** Call Cheryl.

Visit Us On the Web at: [www.gardenre.com](http://www.gardenre.com)

# GREATER MONTANA LAND CO.

**Phone: (406) 538-5448**

**115 East Main, Lewistown, MT 59457**

**www.montanalandco.com**



**SILVER DRIVE** - Very nice upscale home in one of the most desirable neighbors in Lewistown. Updated oak kitchen, bathrooms, new windows, flooring, heating system, master bedroom with master bath, open floor plan, 2 tiered deck, nicely landscaped back yard, all for **\$267,000**. 106 Silver Drive. Call Joe for an appointment 406-350-3006.



**TURQUOISE DRIVE** - This 4 bedroom, 2 1/2 bath split-level home was built in 1995. Updated flooring, new oak stairway, new water heater, new storage building, sprinkler system, Anderson windows throughout, steel sided, chain linked fenced yard, rear deck and established landscaping. Priced at **\$230,000**. 112 Turquoise Dr. Call Jim for an appointment to see 403-350-3004.



**518 WEST SHIELDS** - This well maintained brick home has 3 bedrooms on the main floor, in floor hot water heat, open kitchen, dining room, living room, plus a large family room and 2 finished rooms in the basement. 1 car attached garage plus a 2 car detached one. Price Reduced to **\$128,900**. Call Keith to see this home today 406-366-7840.



**615 FAREWELL** - Many updates! Flooring, paint, furnace, central air, roof, outside paint, front deck. This 3 bedroom home is roomy, has a fenced in back yard with dog run, oversized 2-car garage, and a kitchenette in the basement. **\$139,000**. Call Joe for the tour 406-350-3006.



**408 WEST MONTANA** - Take a look at this very well maintained 3 bedroom home. Has an open floor plan, hardwood floors, main floor utilities, attached garage, fenced in yard, all in a quiet neighborhood. **\$114,000**. Call Joe for a look 406-350-3006.



**PRICED TO SELL - \$49,000** buys this solid 2 bedroom, 1 bath home, updated paint, fenced in yard, nice floor plan. 310 W Morase. Call Joe for the tour 406-350-3006.



**CHARMING** - This cute 2+ bedroom home has character, clean, well maintained, updated bathroom, flooring, paint, furnace, nice oversized 1 car attached garage, all for only **\$99,000**. 1117 W Montana. Call Joe for the tour 406-350-3006.



**NEWLY CONSTRUCTED!** This 3 bedroom, 1 3/4 bath modular home is brand new. Nice open floor plan, master bedroom with master bath, large oak kitchen and well insulated. Home must be moved from present location. Priced at **\$95,000**. Call Joe for an appointment to see 406-350-3006.



**FOUNTAIN TERRACE** - This 2 bedroom, 1 bath condominium has big windows, tall ceilings, lots of updates in 2010 including flooring & paint, nice deck and close to parking. #210 Fountain Terrace. Listed for **\$89,900**. Call Joe for a tour today 406-350-3006.



**Keith  
Conroy**  
Sales  
Associate  
**366-7840**



**Jim  
Irish**  
Broker  
**350-3004**



**Joe  
Irish**  
Broker/ Owner  
**350-3006**



**3 BEDROOMS FOR \$53,000!** This one level home sits on a dead end street, out of the city limits with city sewer and water, hardwood floors, nice family room, updated paint, open covered front porch, big back yard, 3 bedroom, 1 bath. 702 E Montana. Call Joe for an appointment 406-350-3006.



**CENTRAL MONTANA RANCH** - 350 AUM working cattle ranch with over 10,000 acres, 8,400 are deeded of which 1,472 are tillable. Newer 3 bedroom home, a second older home and a nice set of outbuildings and corrals. Well watered, good hay base and excellent hunting, trophy elk, mule deer and antelope on the property. **\$5,200,000**. For more information call Keith at 406-366-7840.



**516 WEST CORCORAN** - This 3 bedroom, 2 bath, 1 1/2 story home has a beautiful open front porch overlooking Lewistown. Was almost completely remodeled in 1992 with hardwood floors, fireplace, formal dining room, sun room and family room. All on a 9,000 sq. ft. lot. Call Jim for an appointment to see 406-350-3004.



**PANORAMIC MOUNTAIN VIEWS!!** - This custom built 2004 home sits on over 21 acres close to town with views in all directions! Custom oak kitchen cabinets, huge master bedroom with walk-in closet and master bath, radiant floor heating, air conditioning, finished basement with large open family room, lots of storage, heated oversized 2 car garage and much more!! 1270 Meadow Brook Drive. **\$437,000**. Call Joe at 406-350-3006 for an appointment.



**CUSTOM LOG HOME** - This one of a kind custom built log home sits on 12+ acres, separated in 3 pastures, and Includes a heated 1440 Sq Ft shop. Home is extremely well built with cathedral ceilings, 2 bedrooms, 2 baths, office area, pool table, 2 car attached garage and large deck to enjoy the distant mountain views! **\$459,900**. 772 Stillman Road. Call Joe for an appointment 406-350-3006.



**MAKE YOUR MOVE!** This 3 bedroom, 2 bath, ranch style home was built in 2005. Master bedroom with master bath, oak kitchen, open floor plan, nicely landscaped oversized lot, chain link fenced back yard, full-unfinished basement & 2 car attached garage. 1612 Osprey Drive. **\$189,000**. Call Joe for a tour today 406-350-3006.



**DIAMOND IN THE ROUGH** - 200 Acres, 2 immaculate homes, many exceptionally well maintained outbuildings, corrals, mature shelterbelt, good water and 140 acres of hay. Locate south of Winnett and priced at **\$419,000**. Call Keith at 406-366-7840 for a tour.



**VIEW INCLUDED!** This 4 bedroom, 1&1/2 bath ranch style home is located only 2 miles from town on 6+ acres. Beautiful daylight basement with sun porch, large deck with nice views, and 1,300 sq. ft. detached garage. 1 bedroom, 1 bath guesthouse with carport is cute and cozy and makes a great rental. This property is a must see! Listed for **\$359,000**. 119 Lime Kiln Rd. Call Jim for an appointment to see 406-350-3004.



**HORSE OWNERS DREAM** - 3 bedroom, single bath on 40 acres just 3 miles from town. 7 stall barn, arena, workshop/garage, fish pond, and wildlife galore. Timber, good grass, and beautiful scenery. 924 Timberline Rd. **\$575,000**. Agent Owned. Call Keith for a personal tour 406-366-7840.

# GREATER MONTANA LAND CO.

**Phone: (406) 538-5448**

**115 East Main, Lewistown, MT 59457**

**www.montanalandco.com**



**TAKE LIFE EASY!** This 2 bedroom, 1 3/4 bath condominium has over 1,400 square feet of living space. New carpet and paint. Kitchen is updated and nice sized. Gas fireplace. Master bedroom with master bath. Large windows overlooking the pond and large private deck. Carport and shed. **\$119,000.** Fountain Terrace #205. Plan to take a tour soon, call Joe at 406-350-3006.



**CAREFREE LIVING!** This well kept 2 bedroom, 1 & 3/4 bath condominium has a nice open floor plan, master bed plus bath, and carport. Fountain Terrace #201. Priced to sell at **\$109,000.** Call Jim for a tour today 406-350-3004.



**SECURE LIFESTYLE** - This 3 bedroom, 2 bath, 1,373 square foot condominium has a beautiful view of Lewistown, a master bedroom & bath, and hardwood floors. Parking spot in basement. Listed for **\$175,000.** 400 7th Ave. S. #215. Call Jim for an appointment to see 406-350-3004.



**ALL ON ONE FLOOR!** - This 1,620 sq. ft., 3 bedroom, 2 bath home was constructed in 2002 and has an open floor plan. Home sits on a large 19,200 sq. ft. lot. 24X28 single car detached garage PLUS a 40X60 steel building. Priced at **\$195,000.** 913 Vrooman. Call Jim for an appointment to see at 406-350-3004.



**CASTLE RIDGE DRIVE** - This very nice 4+ bedroom, 3 bath, ranch style home sits on a 1.5 acre lot. Home has over 3,700 sq. ft of above ground living. Fully finished basement, oversized garage with addition, beautifully landscaped, city water, close to town. Priced at **\$369,000.** 367 Castle Ridge Dr. Call Joe for an appointment to see (406-350-3006).



**ALMOST NEW!** You will be impressed with this 3 bedroom, 2 bath nearly new home. It also has a double car garage, fenced back yard, very nice deck, and is in excellent condition with a view of four mountain ranges. 107 Sage Hen Dr. Priced at **\$179,000.** Call Keith for an appointment to see 406-366-7840.



**PRIME LOCATION** - Nice 2 bedroom, 1 bath on a cute lot with detached garage and tremendous potential! Super quiet neighborhood, close to schools, park, pool and walking trail. 1110 7th Avenue S. **\$69,500.** Call Keith at 406-366-7840.



**BEGIN WITH THIS** 4 bedroom, 1 & 1/2 bath ranch style home with several updates including new countertops in kitchen, some new flooring, fresh exterior paint and new meter loop. Nice hardwood floors in living room, separate dining area. Priced at **\$110,000.** 250 Cedar St. Agent Owned. Call Jim to see at 406-350-3004.



**UNLIMITED POTENTIAL!** This property on the outskirts of Hobson has it all. Industrial, Agricultural or Development take your pick. Included is a nice 2 bedroom, 2 bath home on 28 acres with excellent 3600 sq. ft. insulated shop, 3 phase power and other buildings. Priced at **\$359,000.**





**Keith Conroy**  
Sales  
Associate  
**366-7840**



**Jim Irish**  
Broker  
**350-3004**



**Joe Irish**  
Broker/Owner  
**350-3006**



**EAGLE RIDGE ESTATES** - Now offering 10 to 20 acres view lots overlooking East Fork Reservoir and the majestic Snowy Mountains! Only 12 miles southeast of Lewistown. Excellent access, underground power to each lot. Prices start at **\$81,900**. Call Joe for more information 406-350-3006.



**NO VACANCY!** This well established motel business is in a great location with clean rooms that are a mixture of single, double and three beds and kitchenettes. Includes 3 bedrooms, 1 3/4 bath home all on an 18,750 sq. ft. lot. **\$300,000**. 216 NE Main. Call Joe for more details 406-350-3006.



**PAR 5 LOT** - This 3+ acre lot borders the Pine Meadow Golf Course. Lot has both timber and open ground. Good access. Covenants and restrictions apply. **\$89,000**. Call Joe for more information 406-350-3006.



**BONANZA HILLS LOT** - Oversized 15,000+ sq. ft. lot with beautiful mountain views, city services available on site. Close to schools and walking trails. Listed for **\$44,000**. Uranium Drive. Call Joe for more details at 406-350-3006.



**STONEWOOD FARMS** - These 2+ acre lots have views of Moccasin, Judith & Snowy Mountain Ranges. Public water & sewer. Paved roads. 8 lots available. City lots with a country living environment. Priced from **\$69,000**. Diamond Lane. Call Joe to see these beautiful building sites at 406-350-3006.



**INCOME PROPERTY** - One of a kind commercial building. Extensive work has been done to restore and update this building to the condition it is in. Great downtown location. Current tenant (Lola's) has a lease in place. **\$349,000**. 319 W. Main. Call Joe for more information 406-350-3006.



**COUNTRY CLUB LANE** - 12+/- acres of partially wooded, private land. **\$269,000**. Call Keith for more information 406-366-7840



**SHADOW ESTATES** - 11 lots available bordering the 18 hole Judith Shadows Golf Course. Lots range from 1 to 2.9 acres. Views of Judith, Moccasin and Snowy Mountains. Will build to suit. Developer is licensed architect. Prices start at **\$47,000**. Call Maria Whitcraft for a personal tour at 406-538-6062. Agent owned.



**7 MOUNTAIN RANGE SUBDIVISION** - These picturesque 22 to 37 acre parcels are located about 9 miles south of Lewistown. Wells drilled, electrical to sites, several buildings sites, good access, mountain views, abundant wildlife and room for horses. Covenants and restrictions apply. Prices start at **\$200,000**. Call Joe at 406-350-3006 for more information.

Thomas R. McKenna  
C.I.C./Broker/Owner

110 South Dawes  
Lewistown, MT  
406-538-8736  
1-800-871-8736

**McKenna**  
**AGENCY**  
**Real Estate & Insurance**

Suzan Schaff  
Salesperson 366-2043



Meghan Brandon  
Broker Associate 366-3114



**506 MEAGHER** - 2 bedroom home in Judith Gap FORE-CLOSURE only **\$20,900** - call Meghan



**201 3rd St E. - MOORE MT** - double-wide home on a huge lot, great spaces, updated kitchen, wood-stove 3 bed 2 bath **\$89,000** - call Meghan



**418 W Evelyn** - 3 bedroom home with storage cottage, fenced yard. Great small home or investment opportunity. Ask us about property management and rentals in Lewistown!! -**\$75,000** call Meghan



**514 E BROADWAY** - 3 bedroom home with garage and fenced yard, great neighborhood and updated kitchen. only **\$120,000** - call Meghan



**702 6TH AVE. S.** - 3 bedroom home with a fantastic yard, sprinkler system, A/c, and wood floors. Large updated kitchen, main floor and/or downstairs laundry rooms and more **\$164,000** - call Meghan



**724 W BOULEVARD.** - remodeled in 2006, 3+ bedroom 1 and 1/2 bath home with living and entertaining spaces on the main floor and bedrooms full bath and laundry upstairs. Great location and large yard! only **\$145,000** call Meghan



**417 W ERIE** - Single level 2 bedroom home with large kitchen and fenced yard. **\$67,500** call Meghan



**620 W. ERIE** - 4 Bedroom, 1.5 Bath Home. Features newer furnace, some new flooring and paint. Situated on an oversized lot with a fenced yard, carport and garage. **\$115,000** Call Suzan



**AN ABUNDANCE OF WILDLIFE** out your front door from this 4 bedroom, 3 bath home located on 20 timbered acres. Just minutes from Lewistown near Hansen Creek Dam. **\$495,000** Call Suzan

Thomas R. McKenna  
C.I.C./Broker/Owner

110 South Dawes  
Lewistown, MT  
406-538-8736  
1-800-871-8736

**McKenna**  
**AGENCY**  
**Real Estate & Insurance**

Suzan Schaff  
Salesperson 366-2043

Meghan Brandon  
Broker Associate 366-3114



**1004 HIGHWOOD BLVD** - Terrific views of Lewistown from this 3 bedroom home on an oversized, landscaped, lot. Single car garage and a heated shop. Lots of updates. Brand new roof! **\$159,000** Call Suzan



**CHARMING HOME IN QUIET NEIGHBORHOOD** - With a mixture of old and new this 2 bedroom home has a lot of quality. Nice, detached, 2 car garage and a great yard. 612 W. Idaho. **\$135,900** Call Tom



**MOUNTAIN VIEWS AND ROOM FOR THE HORSES** - Exceptional property just over a mile from town at 212 Judith Mountain Dr. This 3 bedroom home was built in 1978 and has always had meticulous care. There have been many updates over the years. Situated on 20 acres there is a nice barn and a set of corrals. **\$465,000** Call Tom



**SCENIC MOUNTAIN PROPERTY** - 113 acres located in the heart of the North Moccasin Mountains. The log home was built in 2001 and has 3 bedrooms and a large, attached, 2 car garage. Owner pride shows throughout this property. Land includes grazing, hayland and timber. Just 25 miles from Lewistown. **\$620,000** Call Tom



**1101 6TH AVE. S.** - Brick home on an oversized lot. Updated flooring, bath and kitchen. Large living room, covered patio and attached garage. **\$151,000** Call Suzan



**RARE OPPORTUNITY @ 212 5th Ave. N.** - Historic building close to downtown with a 2 bedroom, 2 bath apartment. Zoned commercial. Lovely courtyards for added living space. **\$136,500.** Call Suzan



**124 CARROLL TRAIL.** - Welcome home! Large fenced yard, garage, fireplace, deck, and more. In the Bonanza hills, this home is great! Only **\$189,000** call Meghan, and visit our website for the virtual tour!



**BRICK HOME** - with 2 car garage. 3 bdrm home, with a full basement, located close to the hospital. Lots of potential with this home. 137 MT Pleasant. **\$142,000.** Call Tom



**500 EAST BEAVER RIDGE DR.** - Truly amazing property. Newer, contemporary, home featuring 3 bedrooms, 3 & 1/2 baths all on one level and located on 20 acres. Completely fenced, large barn and great views. Priced well below last appraisal. **\$244,000.** Call Suzan

Thomas R. McKenna  
C.I.C./Broker/Owner

110 South Dawes  
Lewistown, MT  
406-538-8736  
1-800-871-8736

# McKenna

AGENCY

Real Estate & Insurance

Suzan Schaff  
Salesperson 366-2043

Meghan Brandon  
Broker Associate 366-3114



**180 STEEN WAY**- 3 bdrms, 3 bath newer home on 5 ac just two miles west of Lewistown. Carport + Garage, NO covenants **\$244,000** Call Suzan



**75 ACRES NEAR EAST FORK SKYBROOK SUBDIVISION:** Located just a bit over 3 miles from Lewistown with panoramic views of 3 mountain ranges. Excellent water and lots that are big enough for a horse or two. 7 to 12 acres lots. **Prices drastically reduced.** 9 left to choose from. Call Tom.



**FAMILY HOME ACROSS FROM CITY PARK** - 2 story, 3 bedroom home with 1 & 3/4 baths. Hardwood floors and modern kitchen. Fenced yard and it's right across from the city swimming pool. 601 Belden Street. **\$119,500.** Call Tom. Go to our website for the virtual tour



**NICE NEIGHBORHOOD** - Situated on a large lot with mature trees and a garden spot. One bdrm main floor with more room downstairs. Large, remodeled kitchen and main floor laundry. **\$119,500** Call Tom



**401 7TH AVE S. #207** - Two bedroom condo located in esplanade. You have a roof top deck with fantastic views. Recent updates to the condo. Two car garage. Esplanade has great amenities including a swimming pool **\$119,000** call Suzan



**MAIN STREET BEAUTY** - This home has been completely renovated and is designed with the person who wants an office and their home all in one. The large garage has a finished loft that would make an excellent studio. **\$175,000.** Call Tom. Go to our website for the virtual tour



**2 PARCELS OF 30+ ACRES EACH.** Located on Casino Creek Road just minutes from Lewistown. Timber, meadows and creek frontage. **\$124,056 to \$149,320.** Call Suzan



**LEWISTOWN HEIGHTS** - This 64 x 64 storage building is located on four lots. Security chain link fence on two lots. water and sewer on property. wired 220, 13 ft doors, walls are 14 foot high, cement floors. Commercially zoned. **\$192,000** Call Suzan @ 366-2043



**5 ACRE BUILDING SITE** close to town with views of the mountains. Located in the Scenic Mountain Subdivision. **\$49,900.** Call Tom



**5 AC ON HWY** frontage for Commercial use or residential just 2 miles west of Lewistown Call Suzan **\$103,000**

**75 ACRES NEAR EAST FORK DAM**  
- Great building sites with tremendous views. Call Tom



**25 ACRES** on Casino Creek. You have meadows, trees and creek. 6 miles from Lewistown **\$240,000** Call Suzan



**A LITTLE PIECE OF HEAVEN** - Located on 880 ft of spring creek frontage with a 1+ bdrm home and attached garage. **\$180,000.** Owners will carry a contract with qualified buyers. Call Suzan. **Motivated Sellers**



# Tina Stokken

Broker

Phone: 406.350.1088

Email: tnc@midrivers.com

224 W. Main St., Suite 505 • Lewistown, MT 59457



**A LOT OF SHADE** is what you find with this 1 bedroom + sleeping area in the basement, 1 3/4 bath and detached garage. Great corner lot ready for entertaining. Close to swimming pool and Fergus High School. 624 W. Beldon.



**LOTS OF SPACE** is what you get with this great family home on a double, corner lot. 4 bedrooms, 1-1/2 bath, basement, attached garage, and more. 1204 W. Washington



**LOVELY FAMILY HOME** in great neighborhood. 3 bedrooms, 2 1/2 baths, finished basement, garage and more. 210 Hawthorne.



**IN ONE OF LEWISTOWN'S MOST DESIRABLE NEIGHBORHOODS! COMPLETELY UPDATED** 4 bedroom, 2 1/2 bath on 14,000+ sq ft lot. Has been owned by only one family. Updated kitchen, baths, master bedroom with walk-in closet and master bath, new flooring, new windows, siding, composite deck, garage and spectacular views. Don't wait, see today. 210 Carroll Trail

[www.towncountryrealtymt.com](http://www.towncountryrealtymt.com)

More photos and details at... [www.towncountryrealtymt.com](http://www.towncountryrealtymt.com)

703 E. Main  
Lewistown, MT 59457

# Homestead Properties

(406)535-7107



**1112 7TH AVE. NO.**  
**3 BD/1BA, GARAGE**  
**\$159,900**



**211 HAWTHORNE**  
**4BR/2BA, GARAGE**  
**\$75,000**



**515 E BOULEVARD**  
**2 BR/1 BA LG YARD**  
**\$90,000**



**115 CRYSTAL DRIVE**  
**3BD/1BA, GARAGE,**  
**FENCED YARD \$140,000**

*For More  
Information On  
These And Any New  
Listings Visit Us At:  
[www.homestead-properties.net](http://www.homestead-properties.net)*



**501 E WASHINGTON**  
**2BR/1BA, GARAGE**  
**\$78,000**



**208 PARROTT STREET**  
**ROY, MT**  
**\$98,000**



**107 BOOTLEGGER TRAIL**  
**3BR/2BA DBL-WIDE**  
**\$135,000**



**519 LANE STREET**  
**5 BB/3BA ON 3 LOTS**  
**\$265,000**



**Paula  
Burnham**  
**350-2070**  
[burnham@midrivers.com](mailto:burnham@midrivers.com)



**Esther  
Distad**  
**366-4565**  
[www.centralmontanahomes.com](http://www.centralmontanahomes.com)



**Butch  
Crowder**  
**350-2440**  
[butchc@midrivers.com](mailto:butchc@midrivers.com)

More photos and details at... [www.homesteadproperties.net](http://www.homesteadproperties.net)

703 E. Main  
Lewistown, MT 59457

# Homestead Properties

(406) 535-7107



**SUNSET MOTEL**  
**16 UNITS**  
**\$275,000**

*For More  
Information On  
These And Any New  
Listings Visit Us At:  
[www.homestead-properties.net](http://www.homestead-properties.net)*



**EMPIRE  
CAFE**  
**\$179,900**  
**BUSINESS  
ONLY**

**HOMESTEAD PROPERTIES  
IN NOW AN AUTHORIZED  
DEALER FOR CANYON  
SPRINGS LOG HOMES, INC.  
PRICED & FLOOR PLANS VARY.**



**ASPEN MODEL**



**CAN'T FIND WHAT YOUR ARE LOOKING FOR?  
MAYBE BUILDING IS THE WAY TO GO!**



**UNDIVIDED 1/4 INTEREST/  
SHARE IN 2,500 +/- ACRES**  
**\$550,000**



**FAIRVIEW ROAD**  
**2) 20 +/- ACRE PARCELS**  
**\$56,000 EACH**

**SNOWY MOUNTAIN ESTATE**  
**COS #23**  
**13.84 +/- ACRES. NO**  
**IMPROVEMENTS. BORDERS**  
**USDA FOREST SERVICE**  
**\$57,000**



**Paula  
Burnham**  
**350-2070**  
[burnham@midrivers.com](mailto:burnham@midrivers.com)



**Esther  
Distad**  
**366-4565**  
[www.centralmontanahomes.com](http://www.centralmontanahomes.com)



**Butch  
Crowder**  
**350-2440**  
[butchc@midrivers.com](mailto:butchc@midrivers.com)

More photos and details at... [www.homesteadproperties.net](http://www.homesteadproperties.net)



# SHOBE AUCTION & REALTY

www.shobeauktion-realty.com

email: jayson@shobeauktion-realty.com

🏠 408 W Main • Lewistown, MT • 406-538-5125



**FAMILY HOME ON 2 LOTS @ 530 FAREWELL.** 2 bedroom, 1 ¾ baths, full basement, 2 car garage, sprinkler irrigated yard. **\$149,500** Agent owned. Call Kyle Shobe @ 366-0472



**3 BEDROOM HOME @ 249 ASH.** Remodeled kitchen, 2 full baths, finished basement, 1 car garage, sprinkler irrigation, covered patio. Close to school. **\$159,000** Call Jayson Shobe @ 366-5125



**NEAR NEW IN THE COUNTRY @ 265 LONE PINE LANE.** 4 bedroom, 2 bath home on 5 acres, 3.5 miles W. of Lewistown. Pleasant mountain views, covenants due apply. \$374,000 Additional 5 acres avail. @ **\$45,000** Call Jayson Shobe



**FAMILY HOME ON LARGE LOT @ 240 Maple,** Lewistown Very nice single-level 3 bedroom, 1 bath home with hardwood floors. New roof, kitchen & bath updates. Close to schools. **\$133,500** Call Kathy Robbins @ 366-4399



**INVEST IN THIS** 2 bedroom home with large living room and galley kitchen. Beautiful wood work, new carpet in the living room. **Great rental property since 2006. 505 7th Ave S. \$118,000.** Kathy @ 366-4399.



**3 + BEDROOM HOME @ 126 13th Ave. S.,** Lewistown. 3+ bedroom, 2 baths, oak kitchen, maple floors, jetted tub, new int. paint, central air. Basement. **\$137,000** Call Kathy Robbins @ 366-4399



**LOG HOME ON 120 TIMBERED ACRES.** 16 miles east of Judith Gap, MT on S. side of Snowy Mtns. 3 bedroom custom built log home, 2 baths, 2 car garage. Very secluded. **\$495,000** Call Jayson Shobe



**BEAUTIFUL HOME ON 30 TIMBERED ACRES** 7 miles E. of Lewistown. 2700 sq. ft. home w/ attached double garage, paved access, Expertly landscaped yard, covered patio, fabulous views. 30' x 60' heated shop. **\$585,000** Call Ron Combs 406-366-0325



**3 BEDROOM, 1 ½ BATH HOME** on Main Street Coffee Creek, MT. 1750 sq. ft. on one level. Recent upgrades to roof and furnace. Garage/shop. Very clean, well kept and in the middle of pheasant country. **\$68,000.** Call Keith Derks @ 406-899-5600



**FORT MUSSELHELL SUBDIVISION** north of Winnett at Crooked Creek. 3 bordering lots. The lake is continuing to rise & a new boat ramp has been installed. Great for the hunter or fisherman. Starting at **\$26,600** each. Call Patti Kiehl (406)429-5601



**PREMIER HOME OR PRIVATE HUNTING LODGE.** Exquisite Central Montana Log Home with 20 mountain acres, 5 bedrooms, 3 1/2 baths, river rock fireplace, loft, family room & 2 car garage. **\$649,000.** Call Kathy Robbins @ (406)366-4399.



**ONE OF A KIND HORSE PROPERTY** 6 bdrms, 3 ¾ baths, custom built timber-framed home on 160 timbered acres, S. of Lewistown. Large shop, barn & riding arena. Lots of privacy & spectacular views. **\$1,200,000** Call Ron Combs @ 406-366-0325



**RANCH STYLE 3 BDRM, 2 ½ bath** home on 2.2 ac. in Castle Ridge Subdivision. Country kitchen, oversized garage. Great views. Adjacent horse pasture for lease. **\$309,000.** Call Ron Combs @ 366-0325





# SHOBE AUCTION & REALTY

www.shobeauuction-realty.com

email: jayson@shobeauuction-realty.com

408 W Main • Lewistown, MT • 406-538-5125



**TAKE A LOOK** at this nice 2 bedroom, 1 bath home with new stamped patio, newly painted & finished sleeping room in the basement. On corner lot with mature landscaping. **516 8TH Ave. N. \$110,000.** Call Ron Combs (406)366-0325



**NEWLY CONSTRUCTED 3** bedroom, 2 bath home with full basement and bonus room. On 1.5 acres in Castle Ridge subdivision. Home is maintenance free and very energy efficient. **\$349,000.** Call Ron Combs @ 406-366-0325



**MAIDEN CANYON 1.4 acre** building site, in the Judith Mountains. Road & approach roughed in. Building site excavated for a home with a daylight basement. Surrounded by timber. Private & quiet **\$59,000.** Call Ron Combs (406)366-0325



**20 ACRE HORSE PROPERTY** 4 miles north of Lewistown. Water well, electricity on site, wind shelter for animals. **\$99,000.** Call Ron Combs (406) 366-0325



**NEWER HOME ON 23 ACRES,** 1216 Meadowlark Lane, 2 miles E. of Lewistown. 6 bdrms., 3 baths, 3 car garage, detached shop & garden shed. Landscaped & sprinkler irrigated. **\$460,000.** Call Ron Combs (406)366-0325



**A TRUE TROPHY ELK** and deer property. 800+/- acres SE of Grass Range, in the foothills of the Snowy Mountains. Many record bull elk taken on the property. Mule deer, white tail deer, black bear, mountain lion and upland game birds. **\$988,000.** Call Patti Kiehl (406) 429-5601



**READY** for move in or ready for the renter 1 bedroom, 1 bath home with all the appliances. Located on 1 lot. Landscaped yard. Within walking distance of downtown. **1012 W. Broadway. \$85,000.** Call Patti Kiehl (406)429-5601



**GREAT 2 BEDROOM,** 1 bath home with a 1 car detached garage. Partially finished basement w/ sleeping room, family room and laundry area. **821 W. Boulevard. \$85,900.** Call Kathy Robbins at (406)366-4399



**GREAT INVESTMENT PROPERTY!** 3 bedroom, 2 bath home on a large corner lot in Winnett, Mt. Mature yard with garage make this an attractive piece of real estate. Close to hunting, fishing & 90 miles from Billings. Currently rented. **\$69,500.** Contact Patti Kiehl @ (406) 429-5601 or patti@shobeauuction-realty.com



**24.88 ACRES** on East Fork Creek, great access and views. East Fork meanders through the west property boundary . No covenants **\$225,000.** Call Ron Combs @ 406-366-0325



**REMODELED HOME** in Hobson, MT. Will make a great starter or recreation home, zoned commercial. 106 Central, Hobson. **\$84,000.** Call Kathy Robbins at (406)366-4399.



**20 +/- ACRES SOUTH OF SNOWY MOUNTAINS** w/ large double-wide mobile home, shop/garage & pole shed, surrounded by timber. Near Forest Service; would make a super hunting camp. **\$275,000** Call Jayson Shobe @ 406-366-5125



**SPRING CREEK PROPERTY.** Well maintained country home on 1.15 Acres with Big Spring Creek on the property! Extensively remodeled in 1995 - 2+ bedrooms, 2 1/2 baths, single detached garage. Enjoy the wildlife and fishing . right in your own backyard! **\$196,000.** Contact Kathy Robbins @ (406)366-4399



**20 MOUNTAIN ACRES,** beautiful exclusive building site, above Hansen Creek Dam, timber, live water, views, county road access, just 7 miles from Lewistown, 6 miles of pavement! Price **\$165,000.** Contact Ron Combs @ 366-0325



**VERY PRIVATE,** 219+/- acres in the Judith Mountains, close to Lewistown. Expansive views, timber, & abundant wildlife. Access & bordered by BLM on the west & north sides. **\$520,000.** Call Ron Combs @ (406)366-3025.



**PREMIER PROPERTY IN WINNETT,** MT. Spacious 3 brm., 2 bath modular home, with a gorgeous yard. Attached 1 car garage and 2 wells. Just 90 minutes NE of Billings. **\$63,500** Call Patti Kiehl for more information. 406-429-5601.

More photos and details at... [www.shobeauuction-realty.com](http://www.shobeauuction-realty.com)



# SHOBE AUCTION & REALTY

www.shobeauuction-realty.com

email: jayson@shobeauuction-realty.com

408 W Main • Lewistown, MT • 406-538-5125



**FORT MUSSELHELL SUB-DIVISION Lot #12** at Crooked Creek for sale. Great for the hunter or fisherman. **\$28,000.** Call Patti Kiehl at 429-5601



**SMALL TOWN LIVING** in Denton, MT! This 3 bedroom, 1.5 bath home has a detached garage, deck and mature landscaping. Close to downtown. Great Upland Bird country! **\$60,000.** Call Keith Derks @ (406)899-5600.



**35 ACRES GREAT DEVELOPMENT PROPERTY**, edge of Lewistown, city services available **\$359,000.** Contact Ron Combs 406-366-0326



**RUSTIC CABIN on 40 acres** located in Garfield County near the Musselshell River. No utilities, south boundary is fenced. Great hunting camp or weekend getaway. **\$99,000.** Call Patti Kiehl @ (406)429-5601.



**GREEN TREE APARTMENTS** 12 unit complex, **308 W. Washington**, all brick; great rental history. This business will pencil. **\$254,000** Call Ron Combs @ 406-366-0325



**700 ACRES** prime hunting-fishing ag land, 9 miles from Lewistown, 3 cabins, pivot irrigation, 2 year round creeks. **\$1,995,000.** Contact Ron Combs 406-366-0325

## LAND

**3 - 20 ACRE TRACTS - WINDHILL SUBDIVISION** 3 miles N. of Lewistown. One with well & elec.. All @ **\$99,000** each. Covenants apply. Call Ron Combs

**30 & 70 ACRE BUILDING TRACTS IN BADGER HILL** Subdivision, 8 miles SW of Lewistown. Power/telephone to border. **\$84,000** and **\$139,000.** Covenants apply. Call Jayson Shobe @ 366-5125

**72 ACRES NEAR GEYSER** 6 miles W. of Geysler & 2.5 miles N. of Hwy. 200. Drilled well & elec. on property. Perimeter fenced. No covenants. **\$72,000** Call Jayson Shobe @ 366-5125

**20 ACRES 6 MILES W. OF LEWISTOWN** on Jenni Road. Power & telephone at property. Gravel road access. **\$50,000** Call Jayson Shobe @ 366-5125

**MEADOW BROOK SUBDIVISION.** Located 3 miles north of Lewistown, MT. Private & serene home settings with breathtaking views. Tracts from 10-23 acres. Excellent access. Agent owned. Call Ron Combs

## Commercial Listings



**GOTTA HAVE IT** Commercial building @ **410 W. Main**, Lewistown, 50' x 90', 8,830 sq. ft. on 2 levels. Very good condition. Excellent **retail or office location!** **\$324,000.** Call Kathy Robbins @ 406-366-4399



**JAMISON WELDING** in Harlowton, MT 2560 sq. ft. shop on 4.7 acres. Includes all tools & equip., Established clientele. **\$280,000** Call Neil Glennie @ 473-2381



**MAIN STREET BISTRO.** Montana fine diner with a small town atmosphere. Seating for 30 on main floor and 30 in the private lower-level dining area. Very well - equipped kitchen and serving areas. Beer & wine license. Major appliances are in excellent condition. No real estate. Lease transferable. Price: **\$125,000.** Contact Jayson Shobe @ (406)538-5125 or jayson@shobeauuction-realty.com



**3200 SQ. FT. COMMERCIAL SHOP**, with attached living quarters, (960 sq. ft) and office space (960 sq. ft.) all 3 yrs new. Shop and office space designed and wired to be split, separate electrical services. 7 commercial lots, (35000 sq. ft.) plus 3 bedroom Modular Home, mid 70s. 200 ft of frontage on Lewistown By-pass. Price Reduce to **\$575,000** or Shop and 3 lots **\$450,000** or Modular and 4 lots **\$175,000.** Contact Ron Combs @ 366-0325



**POURMANS CAFÉ @ 413 W. Main Street**, Lewistown. Established eatery with updated equipment. Cabaret license. No real estate. **\$179,000** Call Kathy Robbins @ 366-4399

## HIGHWOOD MOUNTAIN RANCH LAND AUCTION

THURSDAY, OCTOBER 14TH, 7 P. M.

BELT COMMUNITY BUILDING, BELT, MT

**922 ACRES IN 3 TRACTS LOCATED 14 MILES EAST OF BELT, MT, IN THE HIGHWOOD MOUNTAINS. EXCELLENT HUNTING AND RECREATING PROPERTY WITH SECLUDED HOME SITES, CLEAN MOUNTAIN WATER INCLUDING BIG WILLOW CREEK AND SEVERAL DEVELOPED SPRINGS. COUNTY ROAD ACCESS TO ALL TRACTS. WILDLIFE INCLUDES ELK, DEER, MOUNTAIN LION AND BEAR. OUTSTANDING VIEWS OF THE LITTLE BELT AND BIG BELT MOUNTAINS, AND THE ROCKY MOUNTAIN FRONT.**

- TRACT 1: 170 +/- ACRES, Timbered, Live Water, Borders State Land.
- SELLS ABSOLUTE TO THE HIGHEST BIDDER. NO RESERVE OR MINIMUM BID.
- TRACT 2: 180 +/- ACRES, Timbered, Live Water, Borders State Land.
- SELLS ABSOLUTE TO THE HIGHEST BIDDER. NO RESERVE OR MINIMUM BID.
- TRACT 3: 572 +/- ACRES, Pasture and Timber, with Live Creeks & Springs, Perimeter and Cross Fenced, Borders U. S. Forest Service. Improvements include a 2-Bedroom Home built in 1981, Older Barn, Cattle Sheds, Shop/Garage. Forest Service grazing permit is for 29 AUMS. TRACT 3 SELLS WITH OWNER'S APPROVAL OF FINAL BID.
- TRACTS WILL BE OFFERED INDIVIDUALLY, NOT IN ANY COMBINATIONS.
- TERMS: CASH TO SELLERS AT CLOSING. CLOSING ON OR BEFORE NOVEMBER 15TH, 2010.
- SELLER TO PROVIDE TITLE INSURANCE.
- PROPERTY SELLS WITHOUT CONTINGENCIES. PROSPECTIVE BUYERS MUST HAVE FINANCING ARRANGED PRIOR TO BIDDING.
- EARNEST MONEY: TRACT 1 & 2: \$30,000 EACH; TRACT 3: \$50,000; ALL NON-RE FUNDABLE.
- AUCTION COMPANY REPRESENTS THE SELLERS.
- FOR A COMPLETE AUCTION BROCHURE AND TO VIEW THIS PROPERTY, CALL KYLE OR JAYSON SHOBE @ 406-538-5125 OR TOM VAN HOOSE @ 406-781-4872.
- VIEW BROCHURE @ [www.shobeauktion.com](http://www.shobeauktion.com)
- OFFERED IN ASSOCIATION WITH UNITED COUNTRY – THOMAS & CO., GREAT FALLS, MT.

**SHOBE** AUCTION  
& REALTY

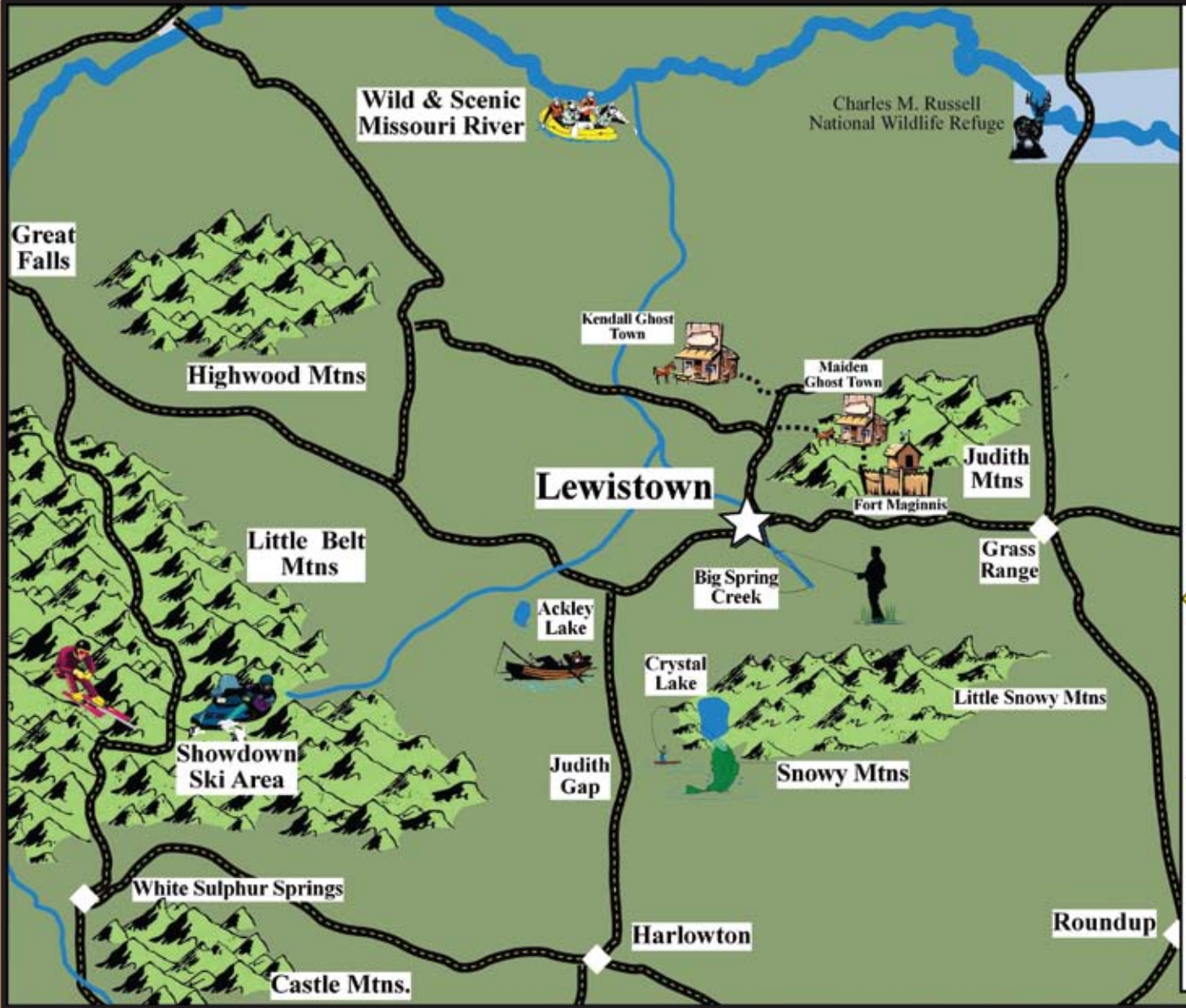
[www.shobeauktion-realty.com](http://www.shobeauktion-realty.com)

email: [jayson@shobeauktion-realty.com](mailto:jayson@shobeauktion-realty.com)

 408 W Main • Lewistown, MT • 406-538-5125

**Jayson & Kyle Shobe**  
Auctioneers & Realtors





# More moves start here



- Extensive product line • Competitive rates • Responsive service and professional knowledge



*Call today.*

Kathie Southworth  
 404 W. Broadway • Lewistown, MT 59457  
 Office: 406-538-1006 • Cell: 406-366-5620  
 kathryne.southworth@wellsfargo.com



Wells Fargo Home Mortgage is a division of Wells Fargo Bank, N.A.  
 © 2009 Wells Fargo Bank, N.A. All rights reserved. #58280 11/09-11/10

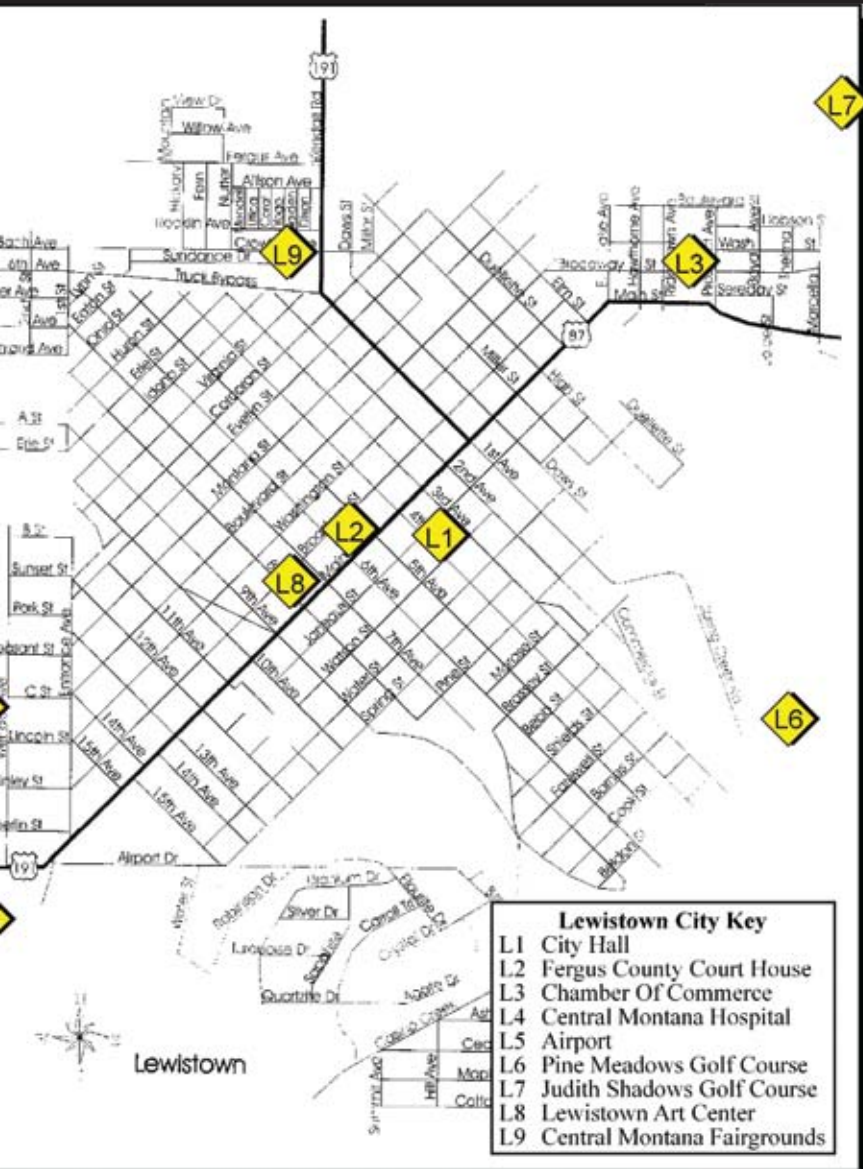


Pick Up Your Copy of  
**Central Montana  
 Homes & Land**  
*"The Center Of The Big Sky"*

In Lewistown or the  
 following communities

- |               |             |
|---------------|-------------|
| Great Falls   | Billings    |
| White Sulphur | Lavina      |
| Springs       | Harlowton   |
| Bozeman       | Judith Gap  |
| Big Timber    | Grass Range |
| Columbus      | Moore       |
| Miles City    | Stanford    |
| Hobson        | Big Sandy   |

All real estate advertising in this publication is subject to the Federal Fair Housing Act which makes it illegal to advertise "any preference, limitation or discrimination based on race, color, religion, sex, handicap, familial status, or national origin, or an intention to make any such preference, limitation or discrimination." Family status includes children under the age of 18 living with parents or legal custodians, pregnant women and people securing custody of children under 18. This publication will not knowingly accept any advertising for real estate which is in violation of the law. Our readers are hereby informed that all dwellings advertised in this publication are available on an equal opportunity basis. To complain of discrimination, call toll-free 1-800-424-8590, or for Montana call (303) 844-6158. The toll-free number for the hearing impaired is 1-800-534-8294.



*Locally Owned &  
 Operated Since 1896*  
**406-535-2326**  
 Fax: 406-535-5184



*Mary Peters 406.636.4000*



## Nancy Weaver

Broker, GRI, CRS

Cell: (406)788-0623

Email:  
weaverprop@midrivers.com



207 W. Main Street  
Suite 2  
Lewistown, MT 59457

Office:  
(406)535-4490

### *Hunting Parcels 410 Area 25 miles N of Winnett*

Tract #17 – **\$149,000.**  
20 acres, seeded to alfalfa.  
Furnished log cabin.

Tract #60 – **\$295,000.**  
24 acres, private entrance,  
premier cabin, cistern.

Tract #28 – **\$80,000.**  
39.84 acres, large pond.  
Owner financing oac



**Hysham Hills Ranch.** 3000+/- deeded acres 2.5 miles E of Hysham 3 parcels: homestead, cultivated land and grazing 160 acres – home, barn shop, feedlot, irrigated 634 acres – 125 irrigated, 25 dry land Sarpy Creek runs through, excellent access 2240+/- acres timbered pasture, great hunting.



**Two Crow Ranch.** 5000+/- deeded acres and 41,287+/- leased acres 30 miles north of Winnett and 76 miles NE of Lewistown Runs 1700+ yearlings from April to September Resident elk herd prized by hunter and shed collectors Ranch headquarters features semi-shipping scale. This one pencils out. **\$3,100,000**



**Missouri River Hunting.** 238+/- deeded acres 18 miles N of Winifred, 65 miles S of Chinook 2 1/4 miles of the Missouri River. Many building sites, excellent water rights, county road access, no covenants. **\$780,000**



**Judith Mountain Paradise.** 40 +/- deeded acres of wilderness only 8 miles NE of Lewistown. A unique and private property in the heart of the Judith Mountains. Surrounded on two sides by over 30,000 +/- acres of BLM land. There is a creek and bottomland, all corners are marked, electricity on property. **\$250,000**



**Forest Grove Ranch.** 270+/- deeded acres 17 miles SE of Lewistown. Rare find in the Little Snowy Mountains Phenomenal view, hunting and recreation. Excellent building site, timbered hills. Fenced perimeter with county road access **\$400,000**

View our Website For Complete Listings:  
[www.weaverranchproperties.com](http://www.weaverranchproperties.com)



Kay Anderson  
Broker  
366-0166

Courtney Cox  
Broker  
350-1164

# Cornerstone Real Estate

120 Wunderlin St. Suite 1

Sally Huber  
Sales Associate  
366-1278

Judy Siegfried  
Sales Associate &  
Property Management  
366-0622



**HUNTER'S RETREAT:** or incredible home with spectacular views nestled in the foot hills of the Snowy Mountains is a real must see with 2 bedrooms, 3 baths, family room, 2 car garage and full private wrap around deck all on 12 acres. Come and take a look with Courtney **\$499,900**



**CENTRAL MONTANA BAR:** with real estate, liquor & gaming lic. located in the heart of Montana with hunting and fishing surrounding this home town community. This place has an excellent Net with occupancy load of 72, six lots, old mobile home and bar that has many updates and continually being improved. Call Courtney. **Price Reduced from \$160,000 to \$130,000**



**ENTERTAINERS DELIGHT:** Come take a look at this huge 2 bedroom home with awesome kitchen and abundance of room for guests with 4 indoor garage spots and a work shop just minutes from town with city water and overlooking Spring Creek and close to public fishing access all situated on just over an acre. Seller is motivated asking **\$330,000**. Call Judy



**VIEWS OF THE JUDITHS:** 34+ acres view of the Judith's in your back yard yet close to town. 3+ bedrooms and 2 sleeping area's in the walk out basement. Nice barn and shed, bring your family, your pets and your horses! Priced to sell at **\$409,000**. Call Sally



**BIG BUCKS & EXCELLENT FISHING:** are some of the things you will find on this 670 acre piece of farm & ranch land with the Judith River running through the heart of it. There is great upland bird and big game hunting. There is power adjoining the property with both hwy and county road access. Asking **\$3,200,000** Call Courtney Cox

To view these and Lewistown's other MLS listings go to [www.cs-realestate.com](http://www.cs-realestate.com)

More photos and details at... [www.cs-realestate.com](http://www.cs-realestate.com)



# Central Montana Real Estate

David M. Miller

18 N. Central

Lindsay K. Dick

Broker/Owner

Harlowton, MT 59036

Sales Agent

(406)220-0795

(406)632-4465

(406)202-1422



**GREAT 4 BEDROOM.** 2 bath family home! 1,732 square feet of living space plus a large attic bonus room. Fenced backyard with a large deck. Accompanied by a detached two car garage. \$83,000 Reduced to **\$79,900.**



**3BD/1BA HOME** Large backyard with mature trees. Great siding and lots of potential. Listed at **\$39,900.** Reduced from 49,400



**GREAT INCOME PROPERTY!** 3 bedroom, 1 1/2 bath 1,472 square foot home. Open dining and living room, extra storage and laundry room all on the main floor. The home is nicely situated on a 4,375 square foot lot. Listed at **\$26,500.**



**4 BEDROOM 2 BATH,** 2,216 square foot home. Large garage/shop with additional wood burning stove. Well manicured lawn with extra carport and RV parking space. This home is a must see with great potential for your family. Listed at **\$145,000.**



**WELL MAINTAINED** three bedroom one and a half bath home on a beautiful 14,000 square foot lot. The property boasts central air-conditioning, newer furnace, water heater and windows, as well as a three car garage. Priced to sell! **\$95,000**



**BEAUTIFULLY REMODELED** 1 bedroom, 1 bath home. Hardwood maple flooring, brand new kitchen, bath, light fixtures, plumbing and wiring. Extra large lot with underground sprinkler system and 2 separate garages. Must see, you won't want to pass this by. Listed at **\$92,500.** Broker owned.



**TWO BEDROOM ONE BATH HOME** in a nice neighborhood. Full sized basement, extra wet bar area, and a metal storage shed in back. Listed at **\$92,500.**



**GREAT BUY.** This 2 bdrm/1ba home has a great location and a great layout. This home has 1,212 square feet and boasts a large sun porch, great master bedroom and open living room. The home sits on a large lot and is accompanied by a detached 1 car garage. Price reduced from **\$57,000 to \$49,900**



**TWO BEDROOMS PLUS** a sleeping room in basement and one bath home. Open living room and kitchen area. Detached one car garage, and landscaped yard with garden areas and mature trees. Listed at **\$72,000.**



**5 BEDROOMS!** This large home with 5 bedrooms, 1 1/2 bathrooms sits in a quiet Harlowton neighborhood on a little city lot. Hardwood floors downstairs, carpet upstairs and bare floor in basement. 1,900 sq feet of living space plus the unfinished basement makes for a lot of room to roam. Listed at **\$82,000**



**LARGE MODERN HOME.** 4 bedroom, 2 bath, open kitchen/dining room/ living room. Spacious additional family room. Large fenced yard. Underground sprinklers. Double car garage. Reduced from **\$148,000 to \$139,900**



**CLEAN WITH MANY NEW RENOVATIONS** and ready to move in. This lovely 1,570 sq. ft. home has 3 BD/2BA with a mostly finished basement. This property boasts a new roof and appliances. Complete with a small fenced yard and patio. **\$69,500**



**GREAT INCOME PROPERTY** 2bdrm, 1bath 800 sq. ft. home with detached garage. Price reduced from **\$23,000 to \$19,500.**



**GREAT NEIGHBORHOOD** 2bdrm, 1 bath remodeled home. Permanent metal siding, detached 2 story garage, with a beautiful yard. **\$59,000.** Reduced from \$61,000.



**TWO BEDROOM ONE BATH HOME** with a brand new roof. Great income property or starter home. Large lawn for garden or play with a storage shed on a cement foundation. Reduced from **\$42,000 to \$39,500**





# Central Montana Real Estate

David M. Miller

18 N. Central

Lindsay K. Dick

Broker/Owner

Harlowton, MT 59036

Sales Agent

(406)220-0795

(406)632-4465

(406)202-1422

## Home/Shop

**\$225,000**



Large 2,300sq ft home with 3 bedrooms & 2 full bathrooms located on outer edge of Harlowton's city limits. Borders Chief Joseph's city park and creek. Interior of home has been made new. Outdoor patio and deck. Large shop (55x40 sq ft) with 3-phase power and large business building with full basement all on 3.2 acres.

## Two Bedroom Two Bath

**Listed at \$195,000**



Large home on 20 acres near Judith Gap. Surrounded by amazing views of the mountains, boasting a wonderful deck, wood burning fireplace and extra pellet stove. Great possibilities for horses.

## Great Business Location!

**Listed at \$50,000**



This building is located on the main street of Harlowton, with on street parking for your business needs. Two large front rooms for retail with multiple rooms for office space throughout the building. Also equipped with a kitchen and bathroom for living purposes. Possible owner financing.

## Prime building site for your new home!

**Listed at \$35,000**



12.8 acres located right outside Harlowton city limits with a beautiful view of the Crazy Mountain Range.

## Large Family Home!

**Listed at \$150,000**



Six+ Bedrooms and 3 full baths make this a perfect home for your family. Nicely situated on 1.57 acres overlooking the crazy mountain range.

## Wonderful Family Home!

**Listed at \$96,500**



**WONDERFUL FAMILY HOME** with 4 bedrooms and 2baths. Character and lots of space is what you will find in this charming home. The home sits on a partially fenced 6,000 square foot lot with spacious garage. Listed at **\$96,500**.

## Four Parcels Of Land

Listed from **\$20,000** to **\$24,900** each.



Consisting of two lots per parcel. Great opportunities for new construction in town. Beautiful views with one parcel neighboring the golf course. Receive up to \$3,500 credit from Central Lumber in Harlowton from seller at closing with the purchase of certain lots. Ask for more details at our office.

## Beautifully Remodeled Home In Ryegate

Price Reduced from **\$149,900** to **\$139,000**



3 bedrooms plus an office, 2 half baths and 2 full baths make up this 2,710 sq. ft. home. Everything has been remodeled with attention to detail. High ceilings and spacious rooms make this home a must see! Large 14,000 sq. ft. lot. **\$139,000**.

## Martinsdale/Hunting Town!

Price reduced from **\$69,000** to **\$59,000**



The tiny retirement / hunting town has a spot for you! Located 26 miles west of Harlowton, this little community has much to offer. Here is a double wide with new windows, insulated walls, secure roof and solid foundation with 1530 sq ft. It has views of the mountain ranges and the Martinsdale fishing reservoir. Double car garage with shop (72x28 sq ft) and an additional storage shed (10x14) are on the property. **Co-Listed**



# Central Montana Real Estate

David M. Miller

Broker/Owner

(406)220-0795

18 N. Central

Harlowton, MT 59036

(406)632-4465

Lindsay K. Dick

Sales Agent

(406)202-1422

## Robidou Belt Mountain Ranch



The ranch sets in the foothills of the Little Belt Mtns w/southern view of both the Crazy Mtns & the Castle Mtns & consists of 3351 acres +/- w/1598 +/- deeded & 1763 State lease. About 1100 of these have had the sage brush chopped & the rocks picked & had winter wheat harvested in the fall of 2009.

There is a U.S. Forest Permit for 43 head for summer grazing attached to this ranch. Mud Creek & Daisy Dean Creek run through the ranch w/ live water for you fish in a private pond or diverted to irrigate. Price reduced from \$1,700,000 to \$1,390,000

## Big Timber Commercial Property

Price Reduced from \$240,000 to \$165,000



No blue sky here. Buy this vet clinic +/- or commercial property in Big Timber, Montana for the value of the real estate. Call office for further details!  
**Reduced to \$165,000.**

## 41 Acre Building Site

\$65,000



41 acres of land located outside of Harlowton, couple miles to the north. Great building site for home, fenced and ready for horses. Road, power and phone included. View of four mountain ranges. Broker Owned.

## Belt Mountain

\$320,000



This 160 acre parcel in the foothills of the Little Belt Mountains is located on a good country road with elk, antelope and deer frequently seen.

## Great Business Opportunity!

Listed at \$29,900



This business building is located on highway 12 in Harlowton and boasts a prime location for all who pass through town. This building has one large main room, a smaller office and restroom.



## JAILHOUSE PIZZA RESTAURANT.

Small family business that generates great revenues. Locally owned and operated and well supported by the community. All recipes and equipment are included with sale of property. Second building in alley included. Great Buy! Listed at \$49,500.





**Saypo Cattle Company** • Choteau, MT • \$24,000,000



**Pintler Trout Creek Ranch** • Philipsburg, MT • \$10,500,000



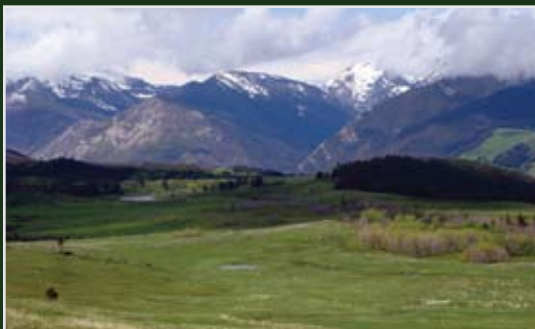
**Cone Butte Ranch** • Roy, MT • \$7,900,000



**Deer Creek Ranch** • Big Timber, MT • \$3,500,000



**Ibex Mountain Retreat** • Wilsall, MT • \$2,500,000



**Taylor Flat Ranch** • McLeod, MT • \$1,900,000



WITH OFFICES THROUGHOUT THE WEST  
1-800-238-8616 • [www.fayranches.com/hlc](http://www.fayranches.com/hlc)

**Kim and Bill Boyce** • Lewistown, MT • Sales Associates

# PHILLIPS REALTY

• PACKAGING MONTANA FARMS & RANCHES • SINCE 1982 •

## — Bordering Properties —

### **HAMILTON ANGUS ON UPPER SPRING CREEK**

There are 212.56 deeded acres in a postcard setting with both sides of Big Spring Creek for 3/4 of mile. This is an incredible 1st time offering in 65 years. Borders Private Fishery. \$ 1,900,000

### **SPECTACULAR TETON RIVER RANCH:**

6,200 deeded acres located near Choteau in a park like setting with 5 miles of the Teton River. High population of Wildlife and Fish. Four Center Pivots Sprinkler Systems. \$ 12,000,000

### **MADISON RIVER RANCH:**

Miles of frontage along the Madison River, a World Class Brown & Rainbow Trout Fishing. 3,377 deeded acres with several Private Trout Ponds. \$ 13,000,000

### **HUNTING AND CRP:**

This 2,320 deeded acres is located 6 miles east of Roundup. Two CRP contracts include 1,497 acres (until 2017) and 158 acres (until 2010). Mule Deer & Upland Game Birds. \$1,850,000

### **COTTONWOOD CREEK CLASSIC:**

857 acres with 1 mile Cottonwood Creek. The buildings are secluded with unsurpassed views. Game Birds, Waterfowl, Deer, & Seasonal Fishing, Cattle, Grain, & Hay. \$ 3,495,000

### **NORTHEASTERN MONTANA DRYLAND FARM:**

This property has 1,155 deeded acres and is located in Daniels & Valley Counties. It contains 1,109 acres of Cropland. \$ 495,000

### **JEWEL IN NATIONAL FOREST BOUNDARIES:**

608 acres in the Little Belt Mountains with 3 miles of live water and meadows. Located along county road near Showdown Ski Area. Absolutely Beautiful. May be split. \$ 2,700,000

### **A "10" FOR PHEASANTS:**

2 miles of brushy creek bottoms and Beaver Ponds with about 400 acres of hay ground. Prolific numbers of Whitetails and Pheasants. Beautiful setting near Mountains. \$ 2,950,000

### **MULE DEER AND PHEASANTS:**

This property has 200 deeded acres and is located 23 miles north of Denton. 117.1 acres of Crop Land. Deer, Antelope, & Upland Birds. \$ 172,000

### **PROPERTY NEAR LEWISTOWN:**

160 acres 1/4 mile off highway 12 miles northwest of town. The property has 128 acres tillable land and a developed spring for livestock. No buildings. \$ 180,000

### **PRIVATE UPPER SPRING CREEK FISHERY:**

89 deeded acres with cabin in private setting. 1/2 mile of Big Spring Creek frontage with manicured lawn and Fishing in your backyard. Borders Hamilton Angus Ranch. \$ 1,200,000

### **PRIVATE VALLEY RANCH:**

295 acres along one half mile of Beaver Creek 10 miles west of Lewistown. Productive irrigated and dryland hay. Private setting. Whitetails, Pheasants, Huns, & Sharpshooters. \$ 749,000

### **BREAKS AREA RETREAT BORDERING BLM LAND:**

240 deeded acres in the famed 410 hunting district. Located 24 miles northeast of Winnett with furnished log cabin. Scattered timber & 1/2 mile Long Coulee. \$ 229,000

### **ELK, DEER, AND PHEASANTS:**

481 acres southeast of Melstone in the Bull Mountains. Scattered timber with 65 acres irrigated hay meadows. Includes a licensed bird hunting permit & modest buildings. \$ 768,000

### **PRIVATE HOME AND ACREAGE:**

40 deeded acres with a spacious home and attached garage. Shop, Shed, & Corrals with Water Tanks. Property is surrounded by larger farms & ranches. \$ 495,000

### **MUSSELSHELL RIVER PROPERTY:**

Located 15 miles north of Melstone this 1,230 deeded acres has both sides of River for 1 + mile. Approximately 75 acres Tillable with Muleys, Whitetails, Antelope, Upland Birds. \$695,000

### **COUNTRY LIVING:**

200 deeded acres and is located 18 miles northwest of Lewistown in the foothills. Included is a Fishing Pond and Food Plots for a variety of Birds, Deer, and Elk. \$ 550,000

### **NEW LISTING - NEAR WINDHAM:**

268.52 deeded acres located one mile north of Windham. The soils are very productive with 149.7 acres cropland, 27.9 acres tame grass, and 90.92 acres native range. \$ 200,000

### **CASTLE CREEK VALLEY:**

154 acres along good county road located 10 miles south of Lewistown. Beautiful panoramic views of the area meadows & trees. The property also has two developed springs. \$ 420,000

### **CENTRAL MONTANA BEAUTY:**

420 acres on McDonald Creek 18 miles SE of Lewistown. Property has productive hayland with immaculate home and out-buildings. Pine Trees, Meadows, & Aspens. \$ 1,400,000

View Video's of Properties Online at [www.phillips-realty.com](http://www.phillips-realty.com)!

Stop In • 207 W Main Street, Ste. 4 Lewistown, MT

Email • [todd@phillips-realty.com](mailto:todd@phillips-realty.com)

Call • (406) 538-5271